



PELHAM

Your space

Schedule of areas

Office space available

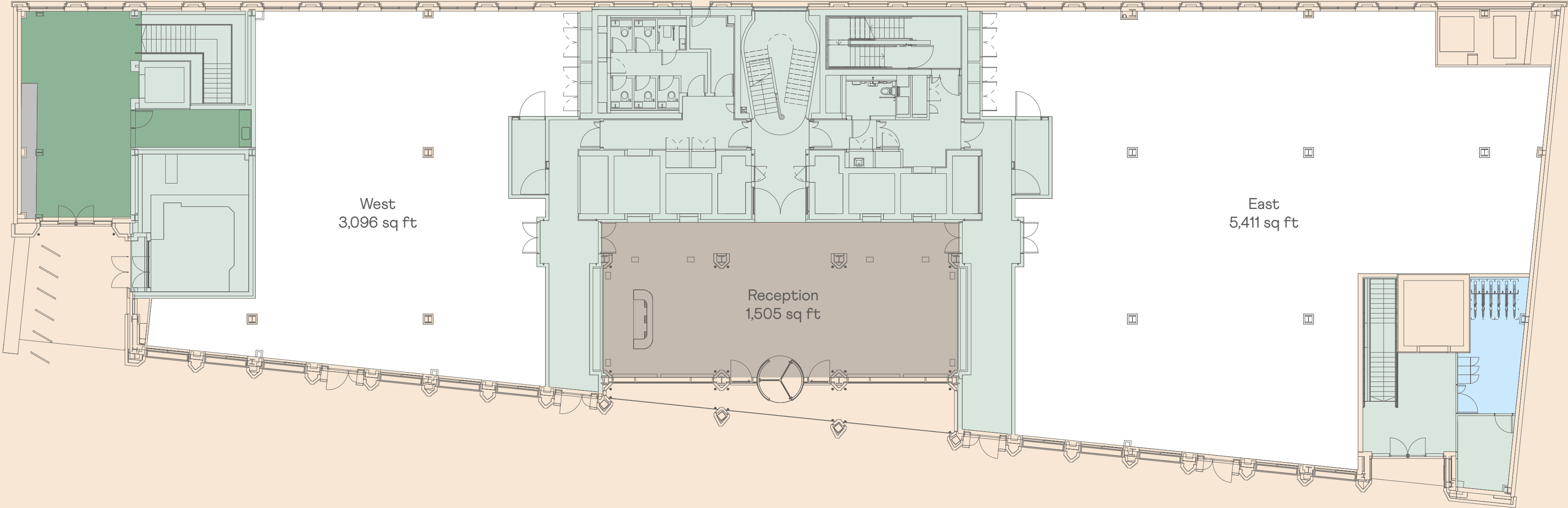
FLOOR	SQ FT	
5th floor (terrace)	8,320	
Terrace*	2,228	
4th floor	11,177	
3rd floor	11,177	
2nd floor	11,177	
1st floor	12,000	
Ground floor	8,507	
Reception*	1,505	
TOTAL	62,358	
Lower Ground	-	
Gym*	8,137	

* Total figure excluding gym, terrace & reception

Total office space: 62,358 sq ft (5,793 sq m)

Ground

8,507 sq ft (790 sq m)



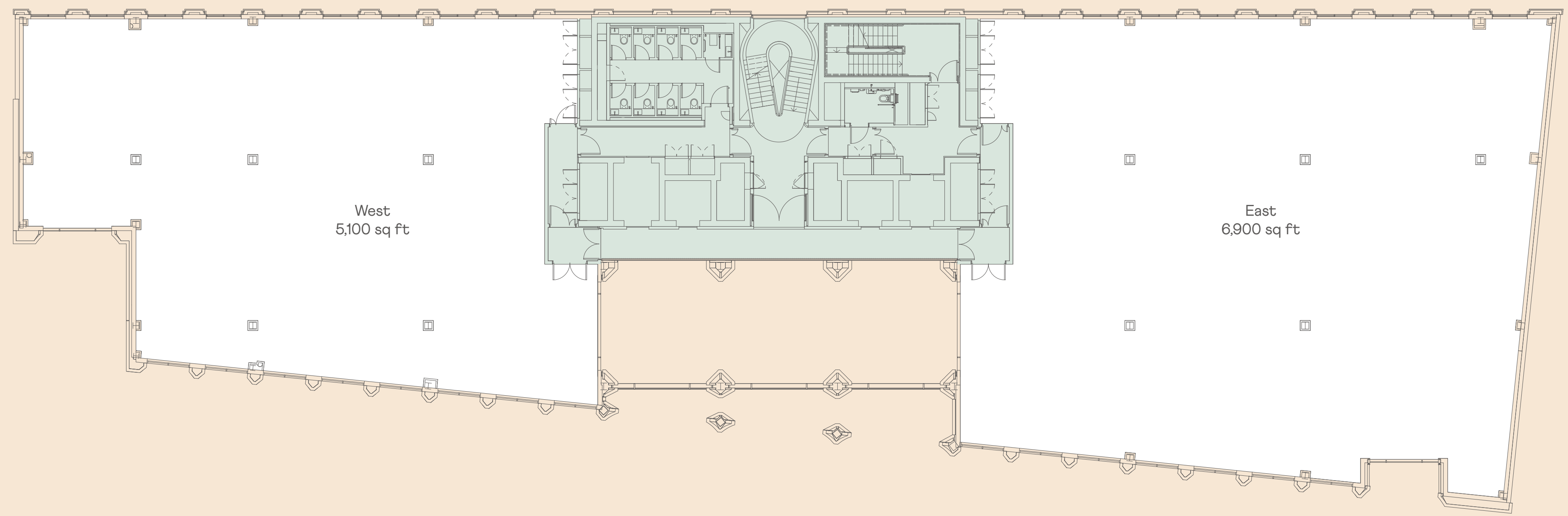
Key

Office
Reception
Gym operator's entrance
Visitor bike parking
Core

Floor plans not to scale. For identification purposes only.

1st

12,000 sq ft (1,115 sq m)



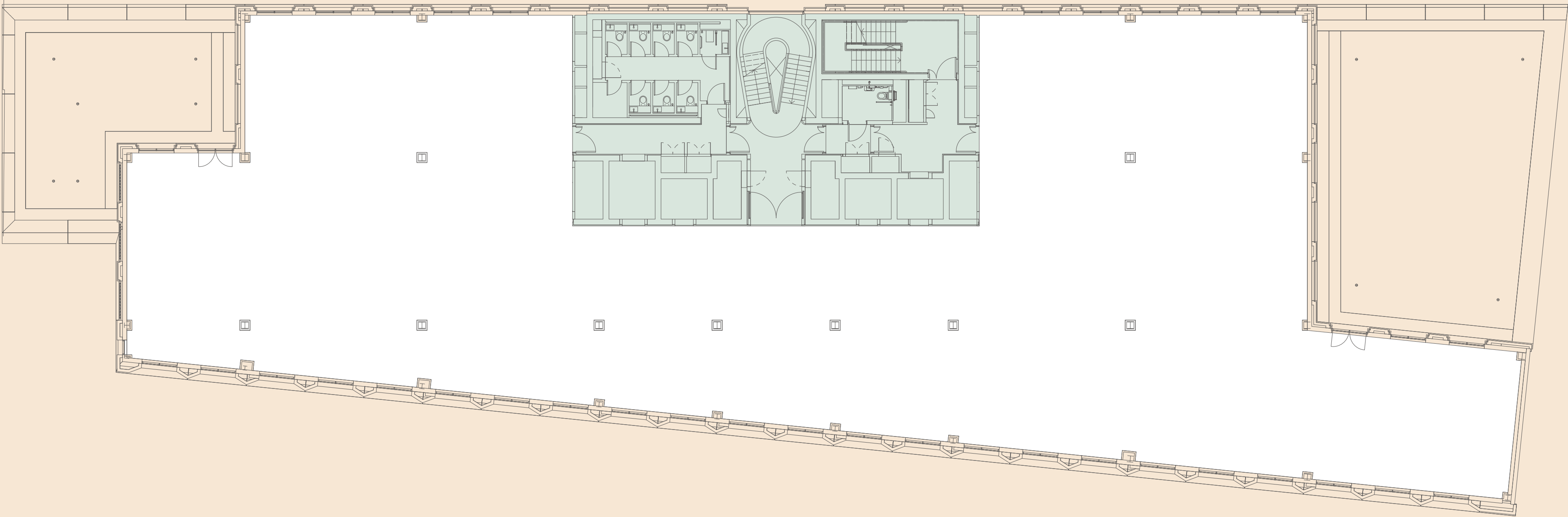
Key

Office
Core

Floor plans not to scale. For identification purposes only.

Typical

2nd - 4th 11,177 sq ft (1,038 sq m)



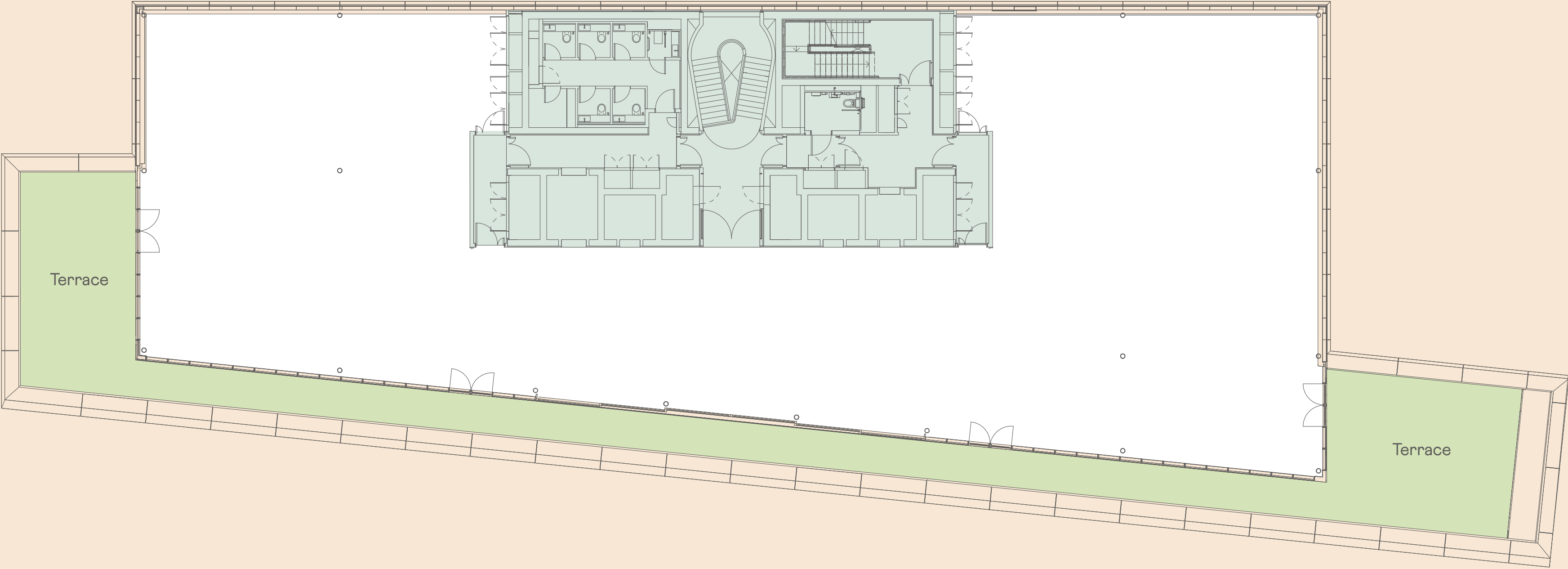
Key

	Office
	Core

Floor plans not to scale. For identification purposes only.

5th

8,320 sq ft (773 sq m)



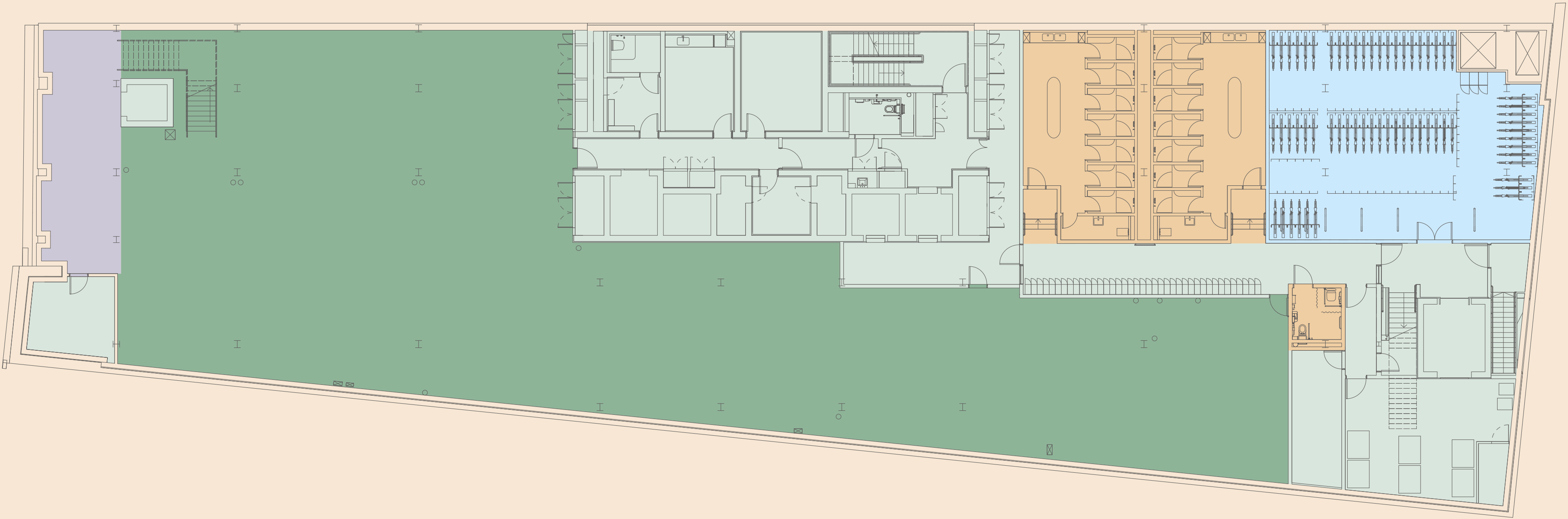
Key

Office
Private terrace
Core

Floor plans not to scale. For identification purposes only.

Lower Ground

8,137 sq ft (756 sq m)



- 15 x Showers
- 150 x bike spaces
- 150 x Lockers

Key	
<div></div>	Gym operator
<div></div>	Showers/Changing rooms
<div></div>	Office bike storage
<div></div>	Gym bike storage
<div></div>	Back of house

Floor plans not to scale. For identification purposes only.



eightypelham.com

Contact

EDWARD CHARLES
& PARTNERS W 1
CHARTERED SURVEYORS

Jamie Shuttle

jshuttle@edwardcharles.co.uk
07788 414332

Ian Bradshaw

ibradshaw@edwardcharles.co.uk
07468 525486



Freddie Corlett

fcorlett@savills.com
07870 555842

Andrew Wedderspoon

awedderspoon@savills.com
07807 999 363

The Agents for themselves and for the vendors or lessors of the property whose agents they are give notice that, (i) these particulars are given without responsibility of The Agents or the Vendors or Lessors as a general outline only, for the guidance of prospective purchasers or tenants, and do not constitute the whole or any part of an offer or contract; (ii) The Agents cannot guarantee the accuracy of any description, dimension, references to condition, necessary permissions for use and occupation and other details contained herein and any prospective purchasers or tenants should not rely on them as statements or representations of fact but must satisfy themselves by inspection or otherwise as to the accuracy of each of them; (iii) no employee of The Agents have any authority to make or give any representation or enter into any contract whatsoever in relation to the property; (iv) VAT may be payable on the purchase price and / or rent, all figures are exclusive of VAT, intending purchasers or lessees must satisfy themselves as to the applicable VAT position, if necessary by taking appropriate professional advice; (v) The Joint Agents will not be liable, in negligence or otherwise, for any loss arising from the use of these particulars. October 2025.